

The contribution from natural sources to primary and secondary PM emissions over the Metropolitan areas of Athens and Thessaloniki

V. Aleksandropoulou and M. Lazaridis

Department of Environmental Engineering, Technical University of Crete, Chania, Polytechnioupolis, 73100, Greece

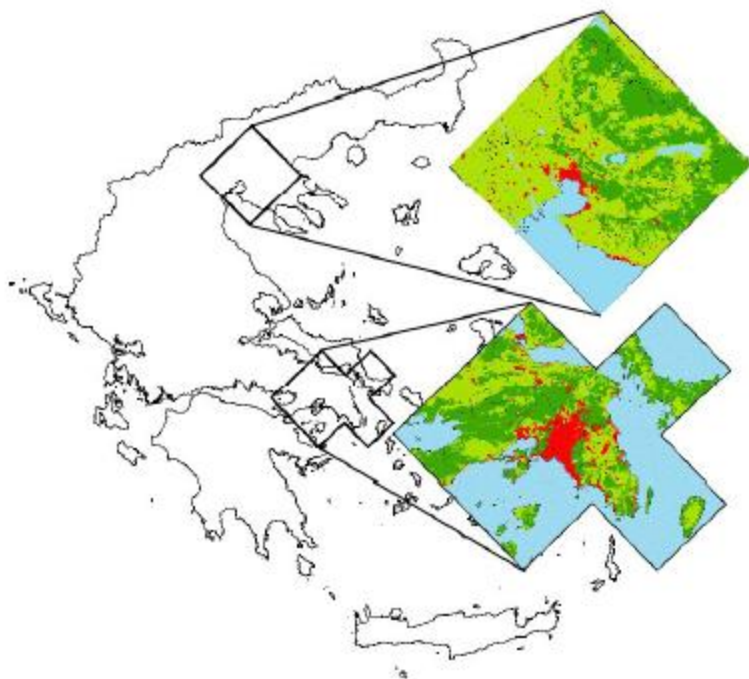
INTRODUCTION

An important step in improving air quality in an area is to assess the impact of specific human activities and natural sources responsible for air quality deterioration through the quantification of pollutants emissions.





Objective: To estimate the contribution from natural sources to PM primary emissions and their precursors over the Athens and Thessaloniki Metropolitan Areas (AMA and TMA, respectively).

Focus: Seasonal and inter-annual variation of natural sources' contribution to total emissions over the areas during the period 2001-2008.

Method: Construction of emission inventories for PM_{2.5}, PM_{2.5-10}



Legend

- | | |
|---|---|
|  Forest and semi natural areas |  Water bodies |
|  Agricultural areas |  Artificial surfaces |